

NOV 13 2017

REQUEST FOR AGENDA PLACEMENT FORM

Submission Deadline - Tuesday, 12:00 PM before Court Dates

Approved

SUBMITTED BY: David Disheroon TODAY'S DATE: 11/06/2017

DEPARTMENT: Public Works

SIGNATURE OF DEPARTMENT HEAD: _____

REQUESTED AGENDA DATE: 11/13/2017

SPECIFIC AGENDA WORDING: Consideration for approval of Amended final plat of The Retreat Phase 7 (adding 20 lots), located in Precinct 1.

PERSON(S) TO PRESENT ITEM: David Disheroon

SUPPORT MATERIAL: (Must enclose supporting documentation)

TIME: 10 minutes

ACTION ITEM: X

WORKSHOP _____

(Anticipated number of minutes needed to discuss item)

CONSENT: _____

EXECUTIVE: _____

STAFF NOTICE:

COUNTY ATTORNEY: _____ **IT DEPARTMENT:** _____

AUDITOR: _____ **PURCHASING DEPARTMENT:** _____

PERSONNEL: _____ **PUBLIC WORKS:** X

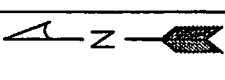
BUDGET COORDINATOR: _____ **OTHER:** _____

*****This Section to be Completed by County Judge's Office*****

ASSIGNED AGENDA DATE: _____

REQUEST RECEIVED BY COUNTY JUDGE'S OFFICE _____

COURT MEMBER APPROVAL _____ Date _____



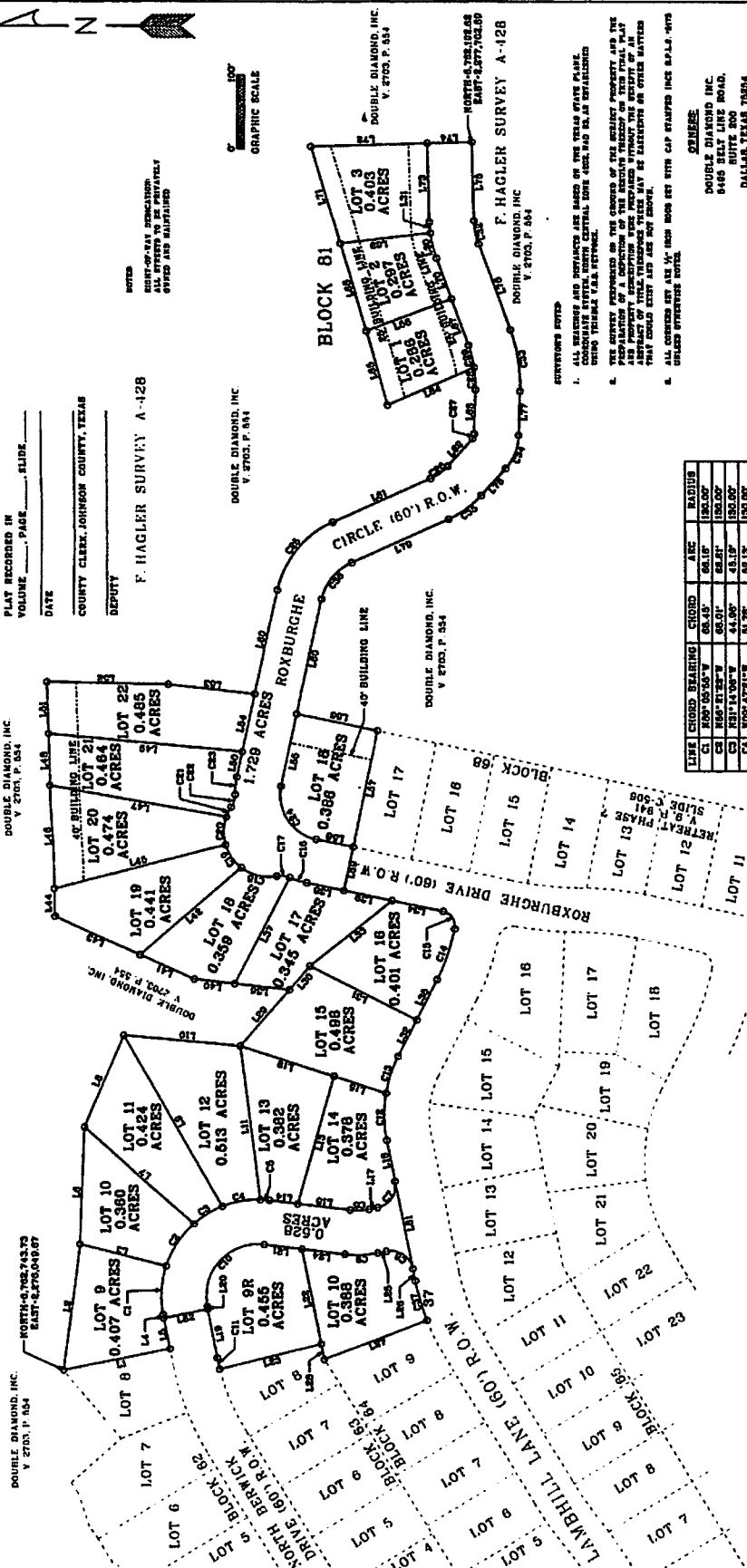
PLAT RECORDED IN VOLUME _____, PAGE _____, SLIDE _____, DATE _____

COUNTY CLERK, JOHNSON COUNTY, TEXAS

DEPUTY

F. HAGLER SURVEY A-128

DOUBLE DIAMOND, INC.
V. 2703, P. 844



LINE	CHORD BEARING	CHORD	ARC	RADIUS
C1	R80°05'50"W	88.43	88.19	128.00
C2	R89°11'32"E	80.17	82.51	130.00
C3	R10°52'51"W	113.00	113.00	113.00
C4	R40°12'15"E	118.27	128.27	150.00
C5	R20°25'10"E	124.97	138.27	160.00
C6	R10°10'10"W	130.20	143.41	170.00
C7	R80°10'10"W	134.97	147.15	180.00
C8	R59°16'00"W	140.20	150.89	190.00
C9	R39°21'50"W	145.43	154.63	200.00
C10	R19°27'40"W	150.67	158.37	210.00
C11	R7°52'45"W	155.90	162.11	220.00
C12	R8°58'40"W	161.13	165.85	230.00
C13	R10°04'35"W	166.37	169.59	240.00
C14	R11°10'30"W	171.60	173.33	250.00
C15	R12°16'25"W	176.83	177.07	260.00
C16	R13°22'20"W	182.07	180.81	270.00
C17	R14°28'15"W	187.30	184.55	280.00
C18	R15°34'10"W	192.54	188.29	290.00
C19	R16°40'05"W	197.77	192.03	300.00
C20	R17°46'00"W	203.01	195.77	310.00
C21	R18°51'55"W	208.24	199.51	320.00
C22	R20°00'00"W	213.48	203.25	330.00
C23	R21°08'05"W	218.71	206.99	340.00
C24	R22°16'10"W	223.95	210.73	350.00
C25	R23°24'15"W	229.18	214.47	360.00
C26	R24°32'20"W	234.42	218.21	370.00
C27	R25°40'25"W	239.65	221.95	380.00
C28	R26°48'30"W	244.89	225.69	390.00
C29	R27°56'35"W	250.12	229.43	400.00
C30	R29°04'40"W	255.36	233.17	410.00
C31	R30°12'45"W	260.59	236.91	420.00
C32	R31°20'50"W	265.83	240.65	430.00
C33	R32°28'55"W	271.06	244.39	440.00
C34	R33°37'00"W	276.30	248.13	450.00
C35	R34°45'05"W	281.53	251.87	460.00
C36	R35°53'10"W	286.77	255.61	470.00
C37	R37°01'15"W	292.00	259.35	480.00

LINE	BEARING	DISTANCE	BEARING	DISTANCE	BEARING	DISTANCE
L1	N10°20'00"W	14.78	N10°20'00"W	14.78	N10°20'00"W	14.78
L2	N89°40'00"E	15.00	N89°40'00"E	15.00	N89°40'00"E	15.00
L3	N88°30'00"E	15.24	N88°30'00"E	15.24	N88°30'00"E	15.24
L4	N87°20'00"E	15.48	N87°20'00"E	15.48	N87°20'00"E	15.48
L5	N86°10'00"E	15.72	N86°10'00"E	15.72	N86°10'00"E	15.72
L6	N85°00'00"E	15.96	N85°00'00"E	15.96	N85°00'00"E	15.96
L7	N83°50'00"E	16.20	N83°50'00"E	16.20	N83°50'00"E	16.20
L8	N82°40'00"E	16.44	N82°40'00"E	16.44	N82°40'00"E	16.44
L9	N81°30'00"E	16.68	N81°30'00"E	16.68	N81°30'00"E	16.68
L10	N80°20'00"E	16.92	N80°20'00"E	16.92	N80°20'00"E	16.92
L11	N79°10'00"E	17.16	N79°10'00"E	17.16	N79°10'00"E	17.16
L12	N78°00'00"E	17.40	N78°00'00"E	17.40	N78°00'00"E	17.40
L13	N76°50'00"E	17.64	N76°50'00"E	17.64	N76°50'00"E	17.64
L14	N75°40'00"E	17.88	N75°40'00"E	17.88	N75°40'00"E	17.88
L15	N74°30'00"E	18.12	N74°30'00"E	18.12	N74°30'00"E	18.12
L16	N73°20'00"E	18.36	N73°20'00"E	18.36	N73°20'00"E	18.36
L17	N72°10'00"E	18.60	N72°10'00"E	18.60	N72°10'00"E	18.60
L18	N71°00'00"E	18.84	N71°00'00"E	18.84	N71°00'00"E	18.84
L19	N69°50'00"E	19.08	N69°50'00"E	19.08	N69°50'00"E	19.08
L20	N68°40'00"E	19.32	N68°40'00"E	19.32	N68°40'00"E	19.32
L21	N67°30'00"E	19.56	N67°30'00"E	19.56	N67°30'00"E	19.56
L22	N66°20'00"E	19.80	N66°20'00"E	19.80	N66°20'00"E	19.80
L23	N65°10'00"E	20.04	N65°10'00"E	20.04	N65°10'00"E	20.04
L24	N64°00'00"E	20.28	N64°00'00"E	20.28	N64°00'00"E	20.28
L25	N62°50'00"E	20.52	N62°50'00"E	20.52	N62°50'00"E	20.52
L26	N61°40'00"E	20.76	N61°40'00"E	20.76	N61°40'00"E	20.76
L27	N60°30'00"E	21.00	N60°30'00"E	21.00	N60°30'00"E	21.00
L28	N59°20'00"E	21.24	N59°20'00"E	21.24	N59°20'00"E	21.24
L29	N58°10'00"E	21.48	N58°10'00"E	21.48	N58°10'00"E	21.48
L30	N57°00'00"E	21.72	N57°00'00"E	21.72	N57°00'00"E	21.72
L31	N55°50'00"E	21.96	N55°50'00"E	21.96	N55°50'00"E	21.96
L32	N54°40'00"E	22.20	N54°40'00"E	22.20	N54°40'00"E	22.20
L33	N53°30'00"E	22.44	N53°30'00"E	22.44	N53°30'00"E	22.44
L34	N52°20'00"E	22.68	N52°20'00"E	22.68	N52°20'00"E	22.68
L35	N51°10'00"E	22.92	N51°10'00"E	22.92	N51°10'00"E	22.92
L36	N50°00'00"E	23.16	N50°00'00"E	23.16	N50°00'00"E	23.16
L37	N48°50'00"E	23.40	N48°50'00"E	23.40	N48°50'00"E	23.40
L38	N47°40'00"E	23.64	N47°40'00"E	23.64	N47°40'00"E	23.64
L39	N46°30'00"E	23.88	N46°30'00"E	23.88	N46°30'00"E	23.88
L40	N45°20'00"E	24.12	N45°20'00"E	24.12	N45°20'00"E	24.12
L41	N44°10'00"E	24.36	N44°10'00"E	24.36	N44°10'00"E	24.36
L42	N43°00'00"E	24.60	N43°00'00"E	24.60	N43°00'00"E	24.60
L43	N41°50'00"E	24.84	N41°50'00"E	24.84	N41°50'00"E	24.84
L44	N40°40'00"E	25.08	N40°40'00"E	25.08	N40°40'00"E	25.08
L45	N39°30'00"E	25.32	N39°30'00"E	25.32	N39°30'00"E	25.32
L46	N38°20'00"E	25.56	N38°20'00"E	25.56	N38°20'00"E	25.56
L47	N37°10'00"E	25.80	N37°10'00"E	25.80	N37°10'00"E	25.80
L48	N36°00'00"E	26.04	N36°00'00"E	26.04	N36°00'00"E	26.04
L49	N34°50'00"E	26.28	N34°50'00"E	26.28	N34°50'00"E	26.28
L50	N33°40'00"E	26.52	N33°40'00"E	26.52	N33°40'00"E	26.52
L51	N32°30'00"E	26.76	N32°30'00"E	26.76	N32°30'00"E	26.76
L52	N31°20'00"E	27.00	N31°20'00"E	27.00	N31°20'00"E	27.00
L53	N30°10'00"E	27.24	N30°10'00"E	27.24	N30°10'00"E	27.24
L54	N29°00'00"E	27.48	N29°00'00"E	27.48	N29°00'00"E	27.48
L55	N27°50'00"E	27.72	N27°50'00"E	27.72	N27°50'00"E	27.72
L56	N26°40'00"E	27.96	N26°40'00"E	27.96	N26°40'00"E	27.96
L57	N25°30'00"E	28.20	N25°30'00"E	28.20	N25°30'00"E	28.20
L58	N24°20'00"E	28.44	N24°20'00"E	28.44	N24°20'00"E	28.44
L59	N23°10'00"E	28.68	N23°10'00"E	28.68	N23°10'00"E	28.68
L60	N22°00'00"E	28.92	N22°00'00"E	28.92	N22°00'00"E	28.92

CONVEYANCE NOTS

- ALL INTERESTS AND RIGHTS ARE LAID ON THE PART OF THE GRANTOR.
- ALL INTERESTS AND RIGHTS ARE LAID ON THE PART OF THE GRANTEE.
- THE SURVEY IS BASED ON THE RECORD OF THE SURVEY AND THE REPLICATOR OF A COPIED OF THE ORIGINAL RECORD ON THE FINAL PLAT.
- IT IS AGREED THAT THE GRANTOR AND GRANTEE HEREBY WAIVE ANY AND ALL RIGHTS THAT COULD EXIST AND ARE NOT KNOWN.
- ALL CORNERS ARE TO BE MARKED WITH CAP STAINED IRON NAILS WITH UNCLE SAM BRAND CONCRETE.

GENERAL

DOUBLE DIAMOND, INC.
5165 BELLY LINE ROAD,
DALLAS, TEXAS 75064
PHONE: (214) 706-8901

FINAL PLAT SHOWING
THE RETREAT, PHASE 7 AMENDED,
LOTS 9, 10, 11, 12, 13, 14, 15, 16,
17, 18, 19, 20, 21, 22 BLOCK 82,
LOT 9R, BLOCK 83, LOT 10, BLOCK
64, LOT 18, BLOCK 88, LOTS 1, 2,
AND 3, BLOCK 81
SUBDIVISION IN
JOHNSON COUNTY, TEXAS
BEING 10.401 ACRES OF LAND LYING AND SITUATED
P. HAGLER SURVEY A-128
JOHNSON COUNTY, TEXAS.
SHEET 2 OF 2

INCE SURVEYING & ENGINEERING
184 THOUSAND OAKS DRIVE WHITNEY, TEXAS 76092
PHONE: 254-694-7703 FIRM: 10068000
FAX: 254-694-7830
SCALE 1"=100' JUNE 21, 2017 SURVEY NO. SN170117.1